

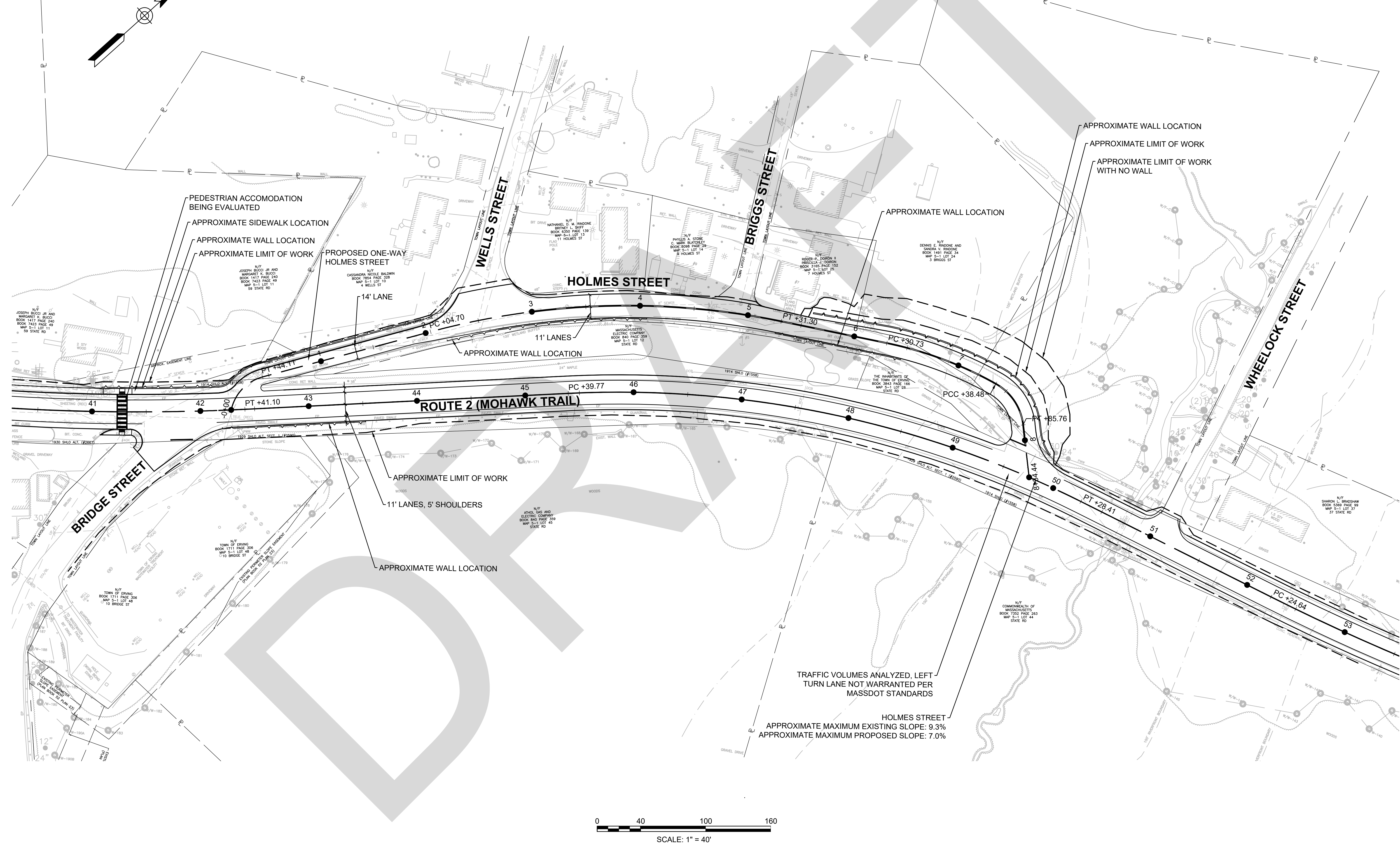
HOLMES STREET ALTERNATIVE 1

EXISTING ALIGNMENT - 60 DEGREE

ERVING
ROUTE 2 (FARLEY AREA)

STATE	FED. AID PROJ. NO.	SHEET NO.	TOTAL SHEETS
MA	#####	---	#
PROJECT FILE NO.		604959	

EXISTING ALIGNMENT - 60 DEGREE ALTERNATIVE



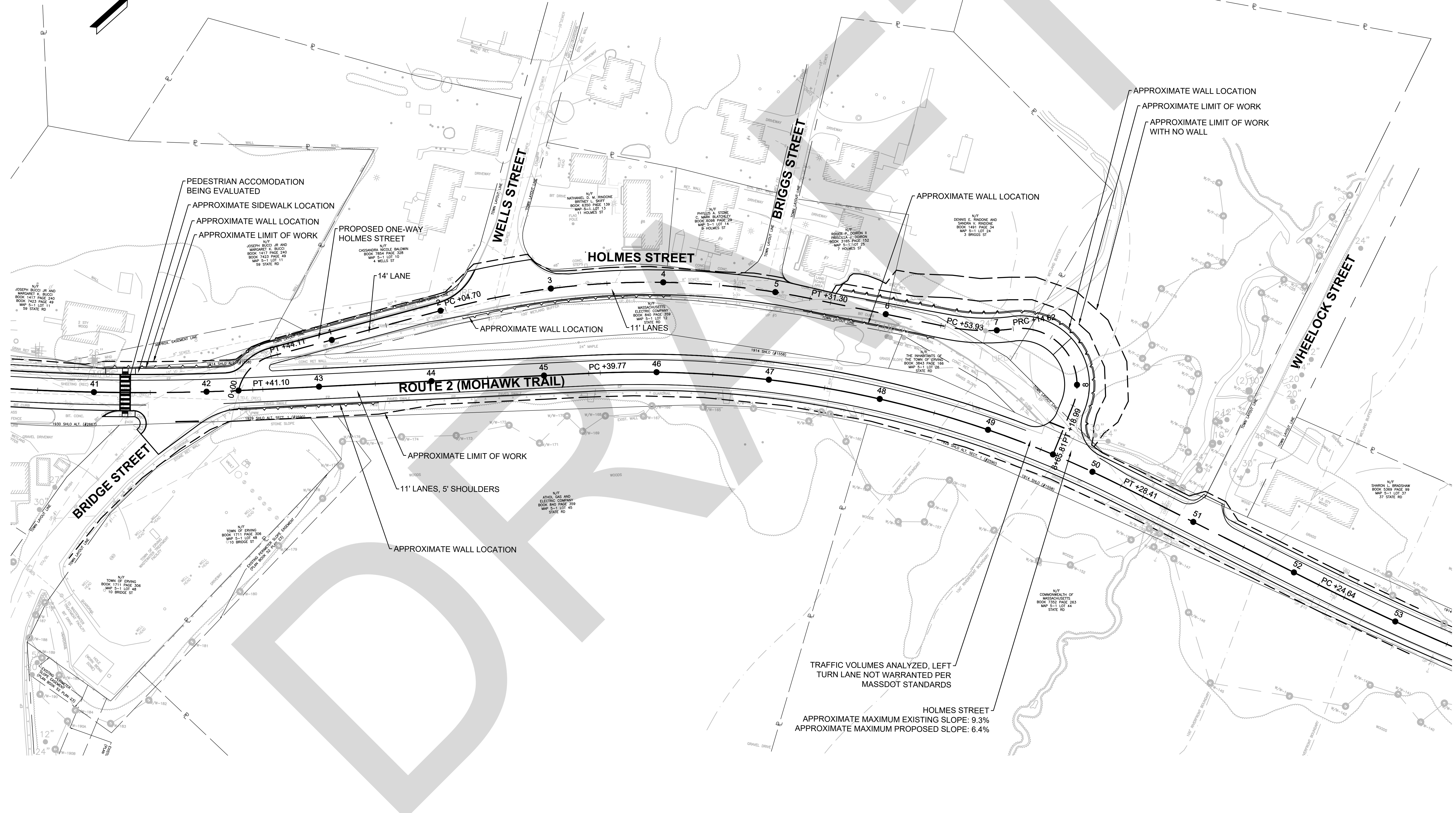
HOLMES STREET ALTERNATIVE 2

EXISTING ALIGNMENT - 90 DEGREE

ERVING ROUTE 2 (FARLEY AREA)

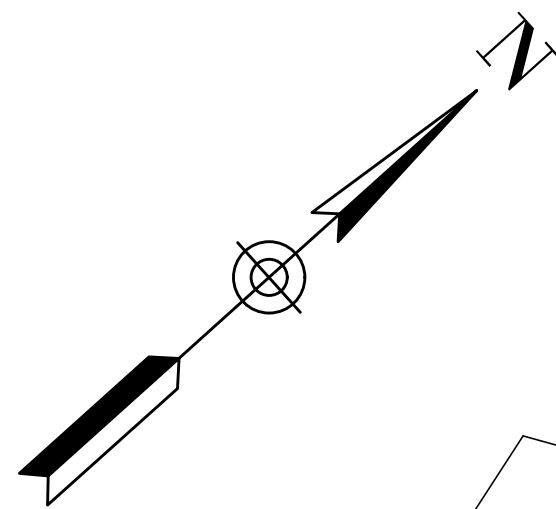
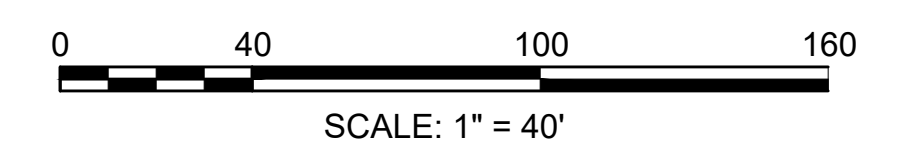
STATE	FED. AID PROJ. NO.	SHEET NO.	TOTAL SHEETS
MA	#####	---	#
PROJECT FILE NO.		604959	

EXISTING ALIGNMENT - 90 DEGREE ALTERNATIVE



TRAFFIC VOLUMES ANALYZED, LEFT TURN LANE NOT WARRANTED PER MASSDOT STANDARDS

HOLMES STREET
APPROXIMATE MAXIMUM EXISTING SLOPE: 9.3%
APPROXIMATE MAXIMUM PROPOSED SLOPE: 6.4%



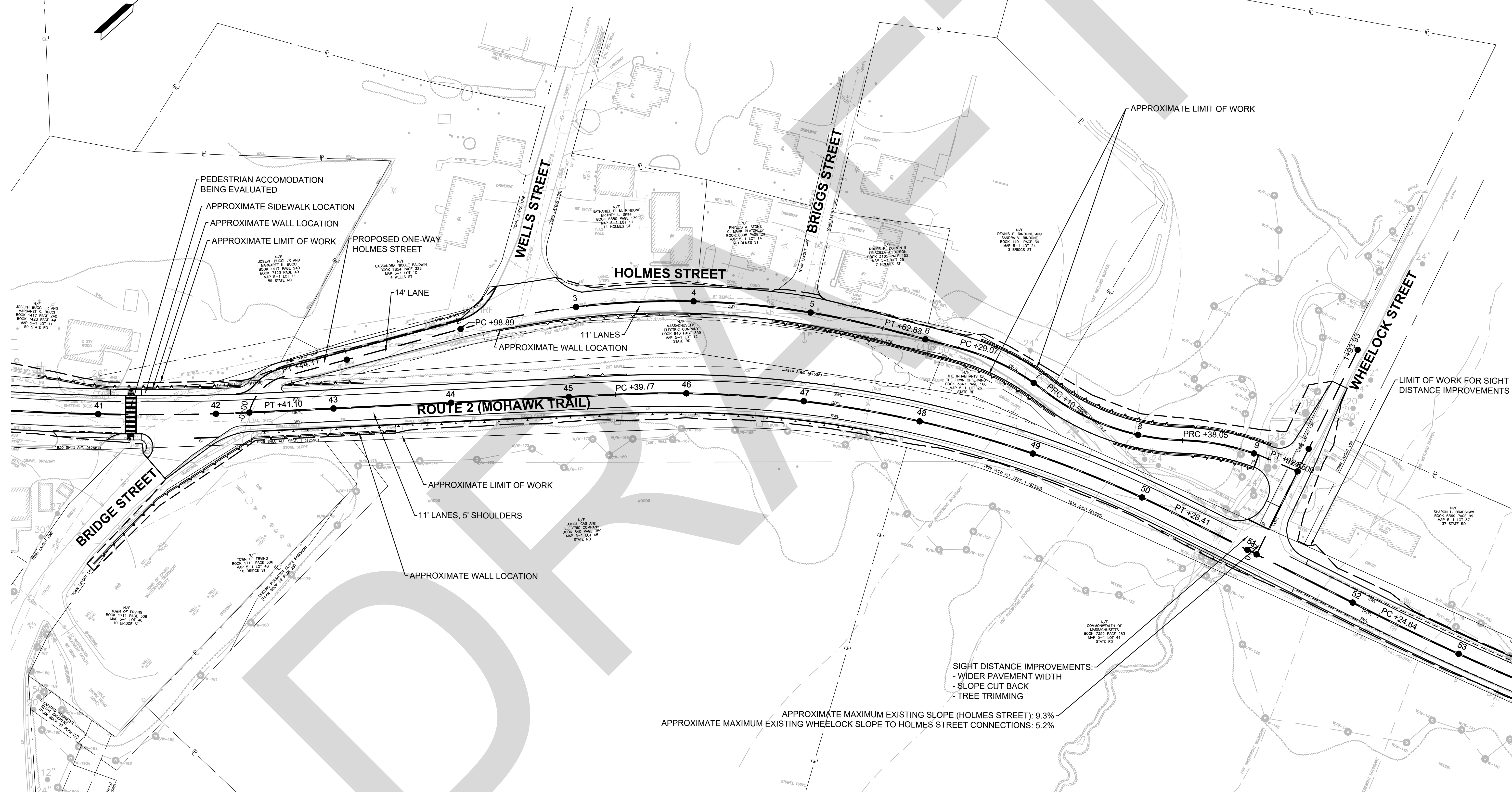
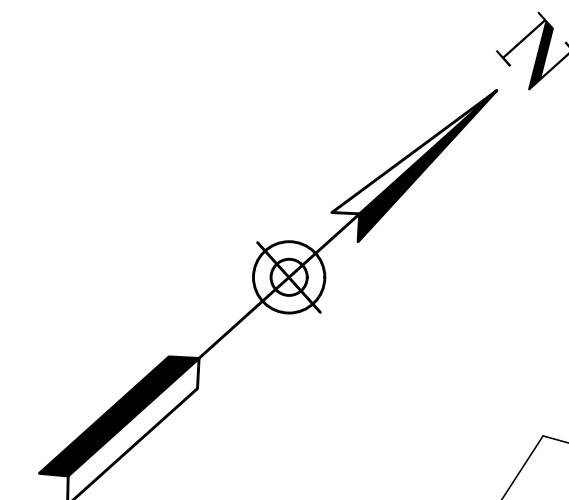
ERVING
ROUTE 2 (FARLEY AREA)

STATE	FED. AID PROJ. NO.	SHEET NO.	TOTAL SHEETS
MA	#####	####	#
PROJECT FILE NO.		604959	

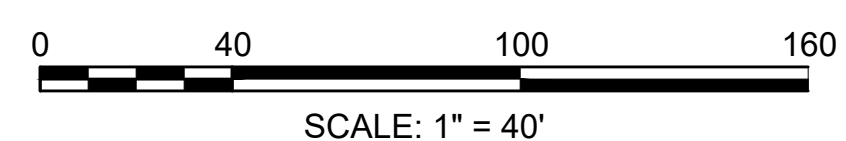
EXISTING ALIGNMENT - CONNECTION TO WHEELOCK

HOLMES STREET ALTERNATIVE 3

EXISTING ALIGNMENT - WHEELOCK CONNECTION (HOLMES STREET ONE WAY)



APPROXIMATE MAXIMUM EXISTING SLOPE (HOLMES STREET): 9.3%
 APPROXIMATE MAXIMUM EXISTING WHEELOCK SLOPE TO HOLMES STREET CONNECTIONS: 5.2%



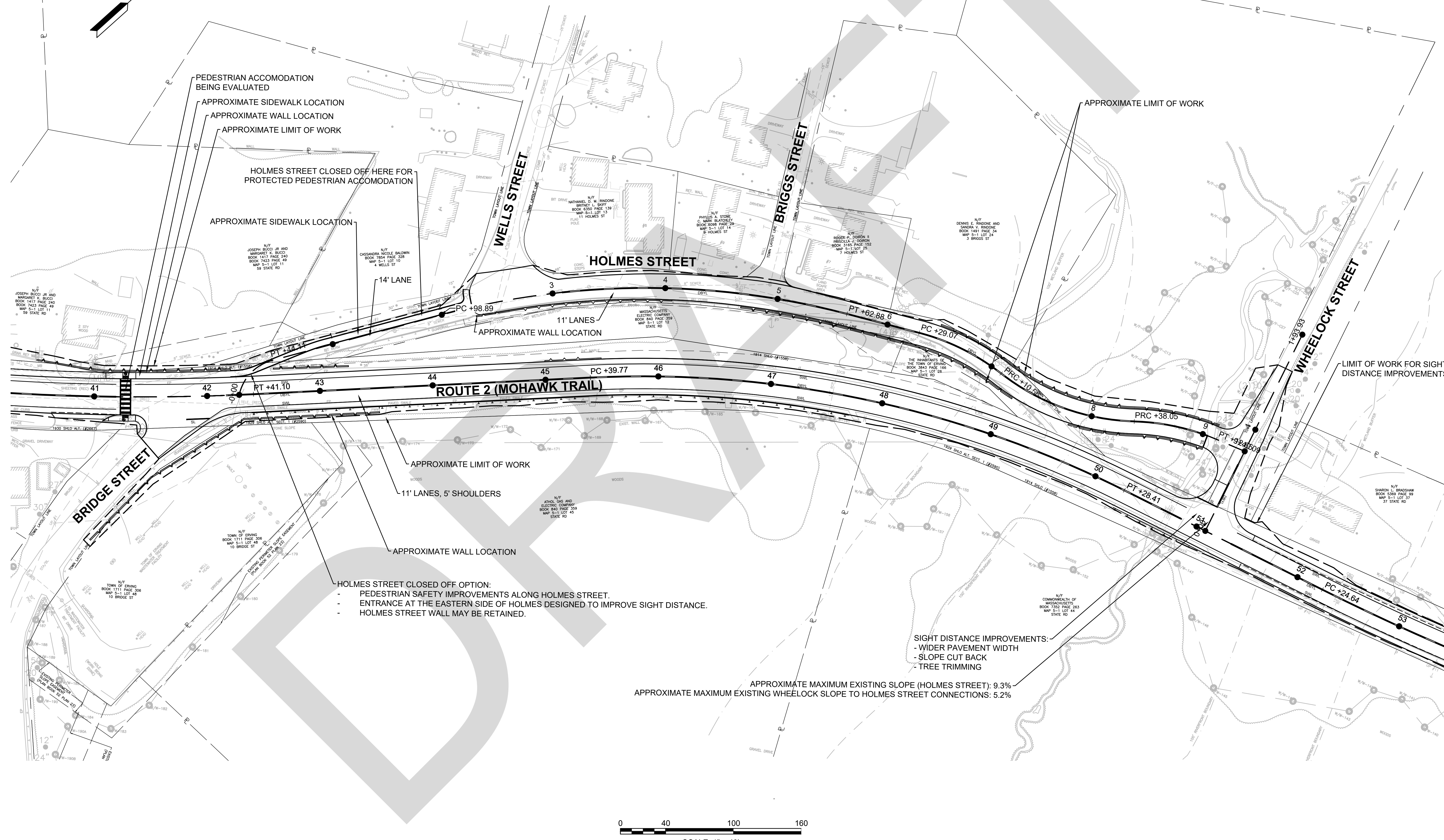
ERVING
ROUTE 2 (FARLEY AREA)

STATE	FED. AID PROJ. NO.	SHEET NO.	TOTAL SHEETS
MA	#####	####	#
PROJECT FILE NO.		604959	

EXISTING ALIGNMENT - CONNECTION TO WHEELOCK

HOLMES STREET ALTERNATIVE 4

EXISTING ALIGNMENT - WHEELOCK CONNECTION (HOLMES STREET CLOSED OFF)



PEDESTRIAN ACCOMODATION BEING EVALUATED
APPROXIMATE SIDEWALK LOCATION
APPROXIMATE WALL LOCATION
APPROXIMATE LIMIT OF WORK

HOLMES STREET CLOSED OFF HERE FOR PROTECTED PEDESTRIAN ACCOMODATION

APPROXIMATE SIDEWALK LOCATION

14' LANE

11' LANES
APPROXIMATE WALL LOCATION

ROUTE 2 (MOHAWK TRAIL)

APPROXIMATE LIMIT OF WORK

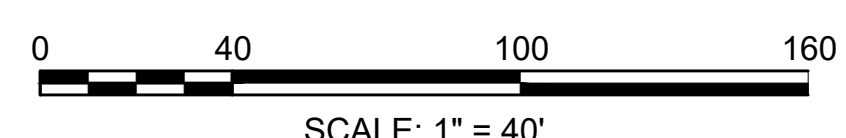
11' LANES, 5' SHOULDERS

APPROXIMATE WALL LOCATION

- HOLMES STREET CLOSED OFF OPTION:
- PEDESTRIAN SAFETY IMPROVEMENTS ALONG HOLMES STREET.
 - ENTRANCE AT THE EASTERN SIDE OF HOLMES STREET DESIGNED TO IMPROVE SIGHT DISTANCE.
 - HOLMES STREET WALL MAY BE RETAINED.

- SIGHT DISTANCE IMPROVEMENTS:
- WIDER PAVEMENT WIDTH
 - SLOPE CUT BACK
 - TREE TRIMMING

APPROXIMATE MAXIMUM EXISTING SLOPE (HOLMES STREET): 9.3%
APPROXIMATE MAXIMUM EXISTING WHEELOCK SLOPE TO HOLMES STREET CONNECTIONS: 5.2%



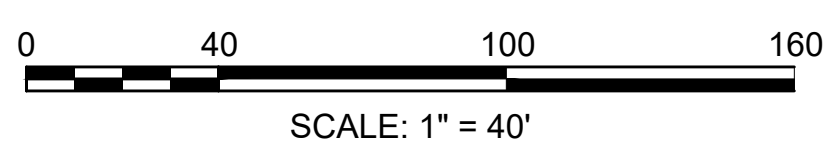
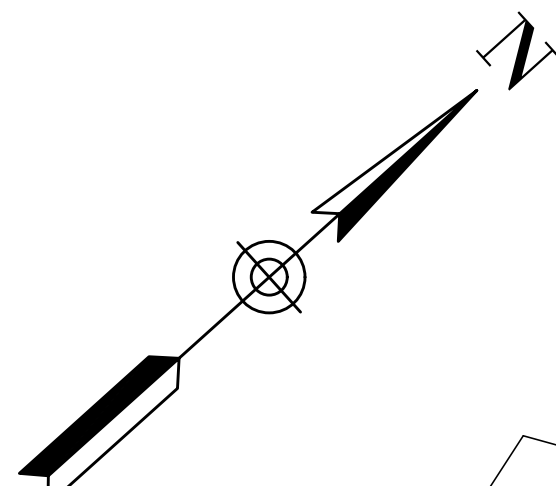
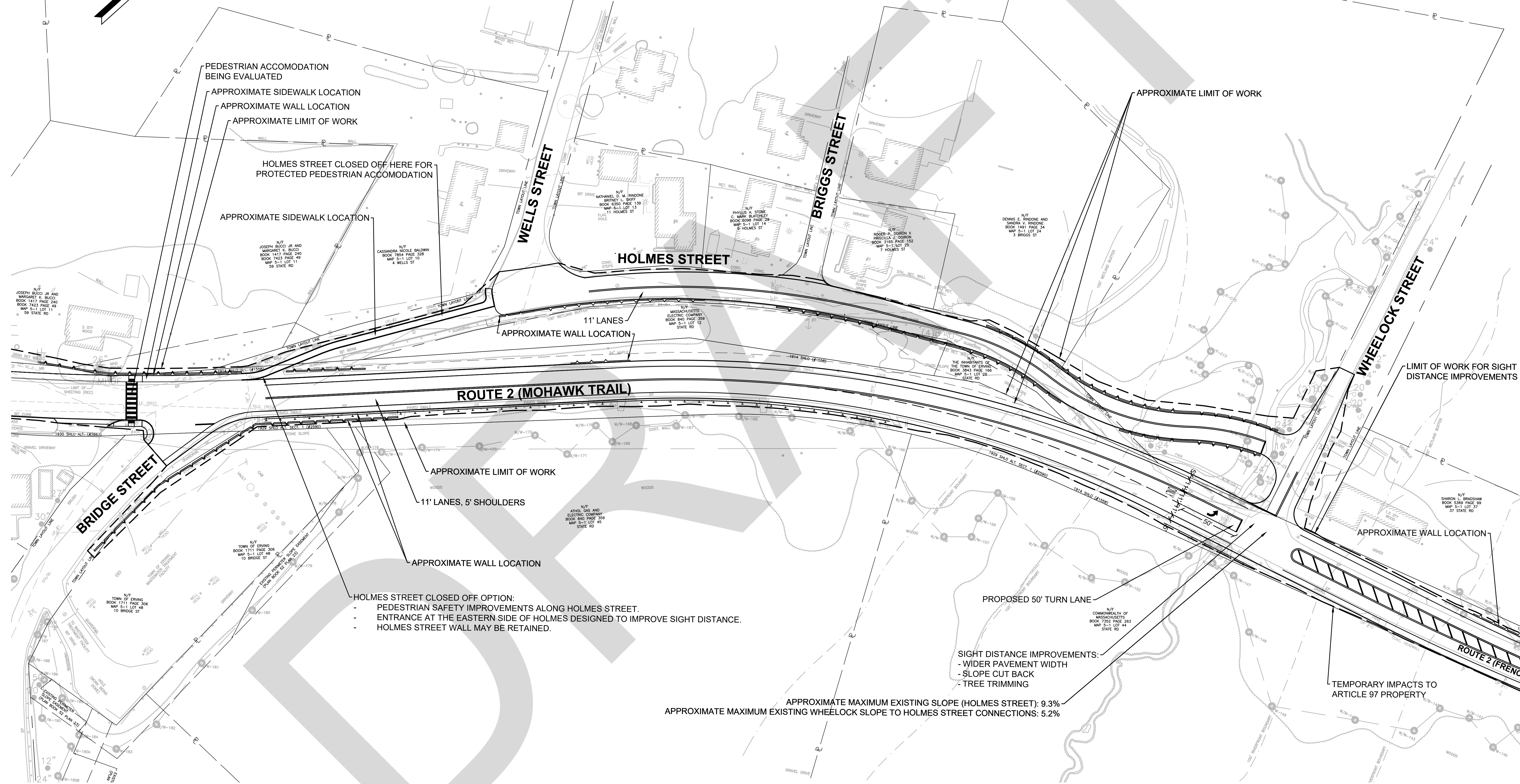
ERVING
ROUTE 2 (FARLEY AREA)

STATE	FED. AID PROJ. NO.	SHEET NO.	TOTAL SHEETS
MA	#####	1	2
PROJECT FILE NO.		604959	

LEFT TURN LANE CONCEPT

HOLMES STREET ALTERNATIVE 5

WHELOCK CONNECTION - LEFT TURN LANE CONCEPT (HOLMES STREET CLOSED OFF)



CONTINUED ON SHEET NO. 2

