

Town of Erving  
Open Space &  
Recreation Plan 2018

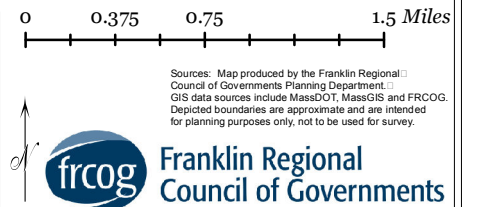
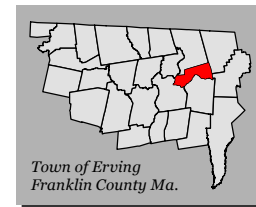
# Regional Context Map

**Open Space**

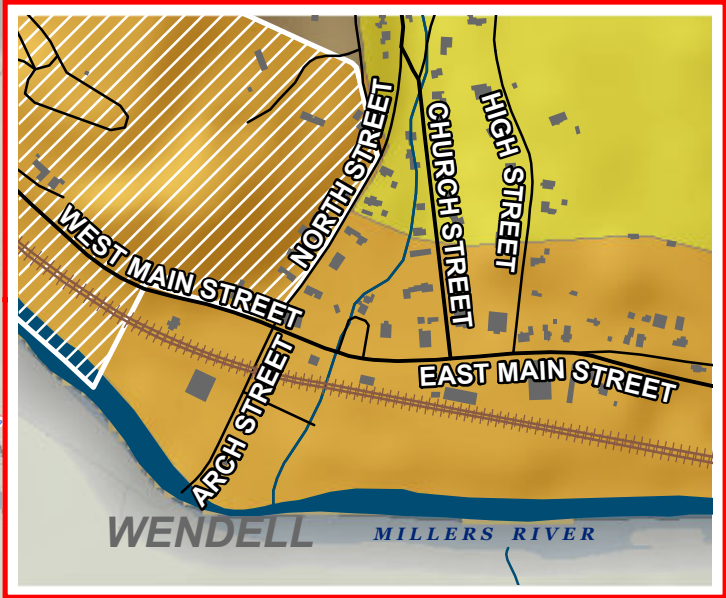
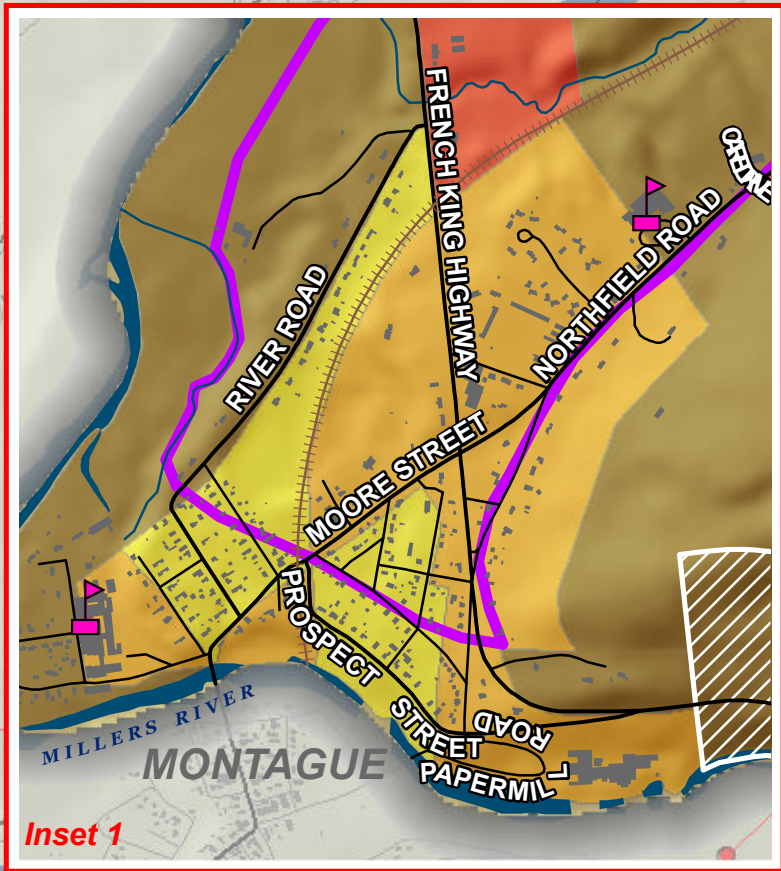
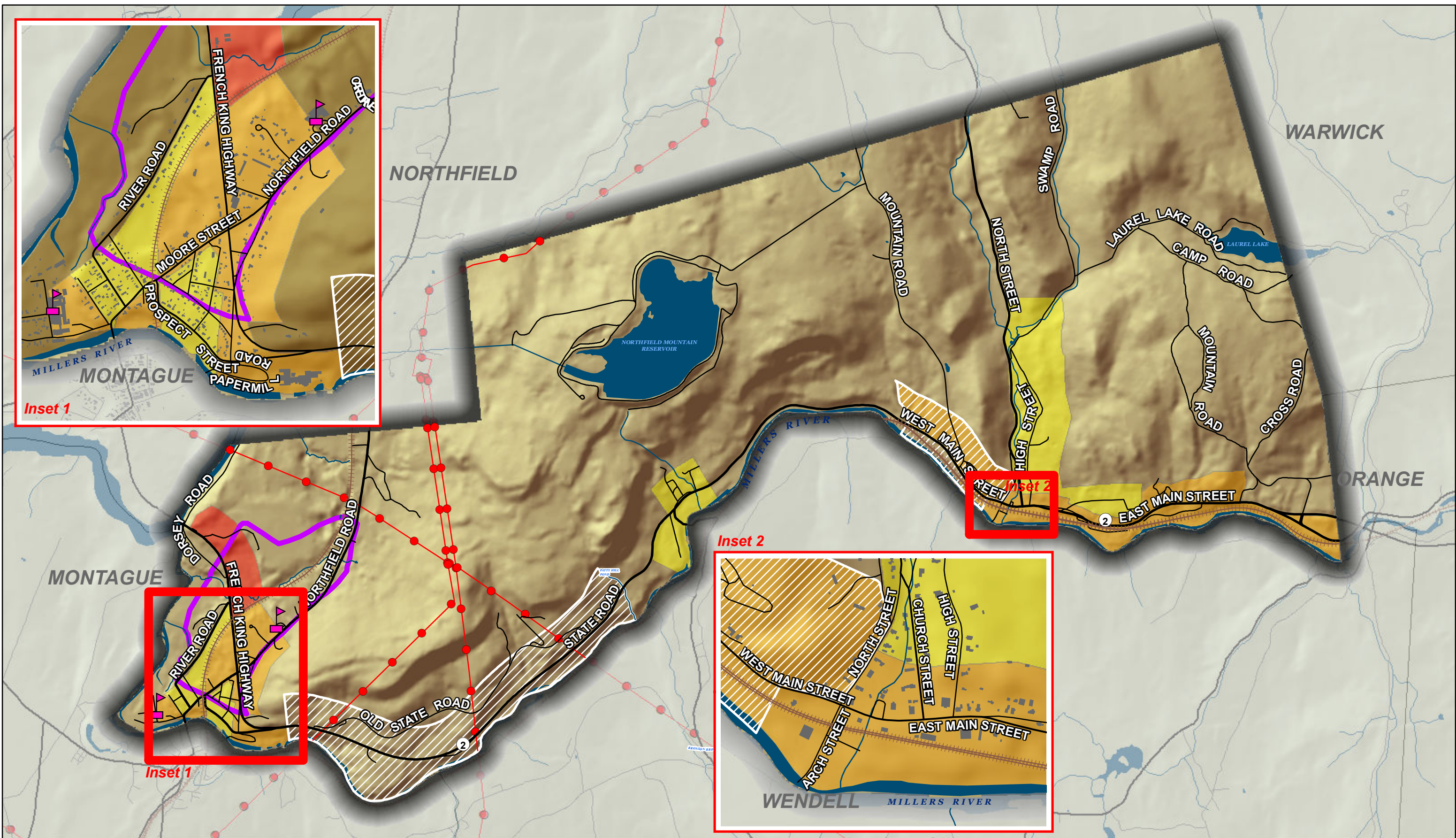
- Permanently Protected
- Forest Land Use
- Scenic Byway Corridor

- Transmission Line
- Town Boundary
- Water Body

- River, Stream
- Major Road
- Road







# Town of Erving Open Space & Recreation Plan 2018

## Zoning Districts

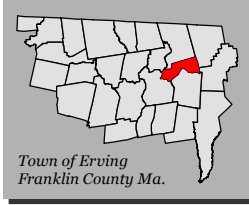
### Zoning District

- Central Village (CV)
- French King Commercial (C)
- Village Residential (VR)
- Rural Residential (RR)

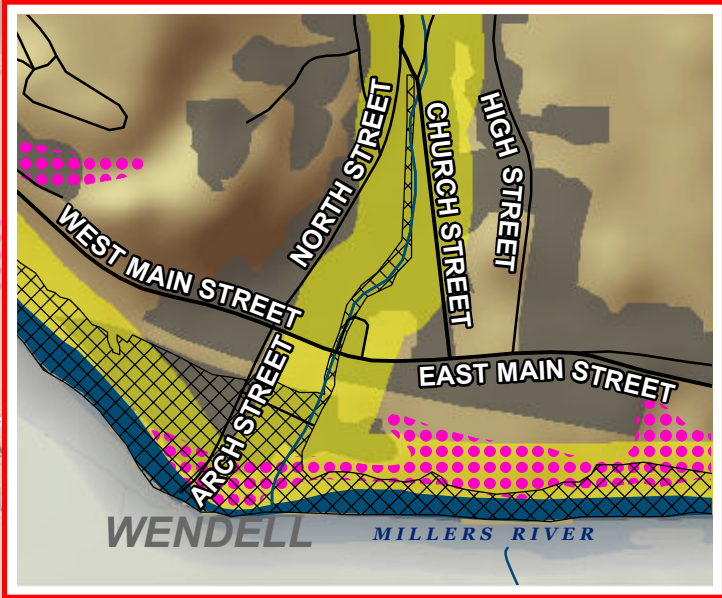
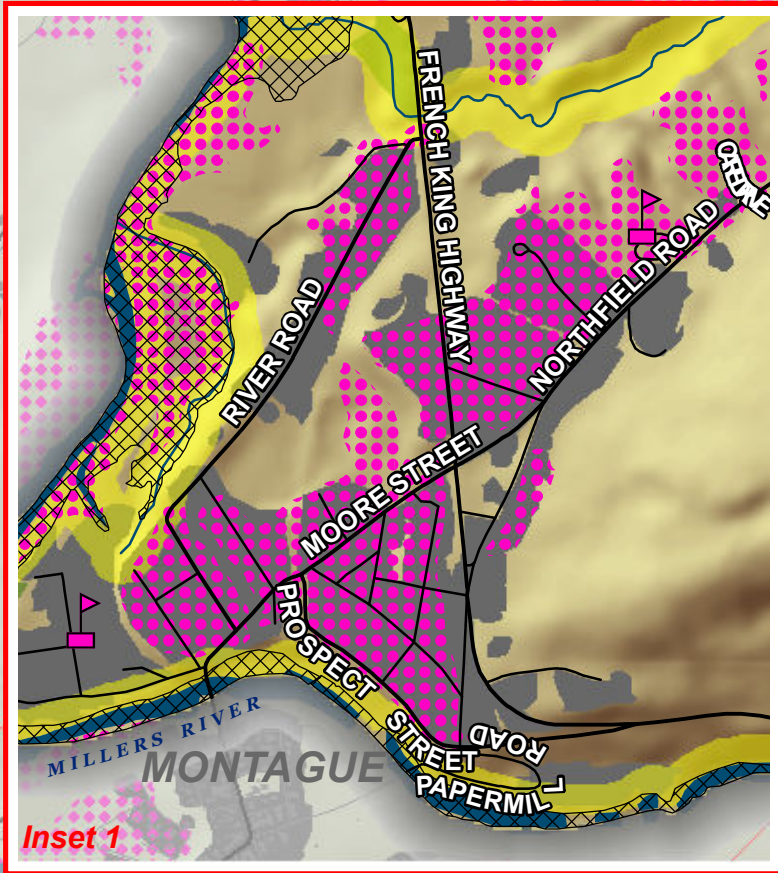
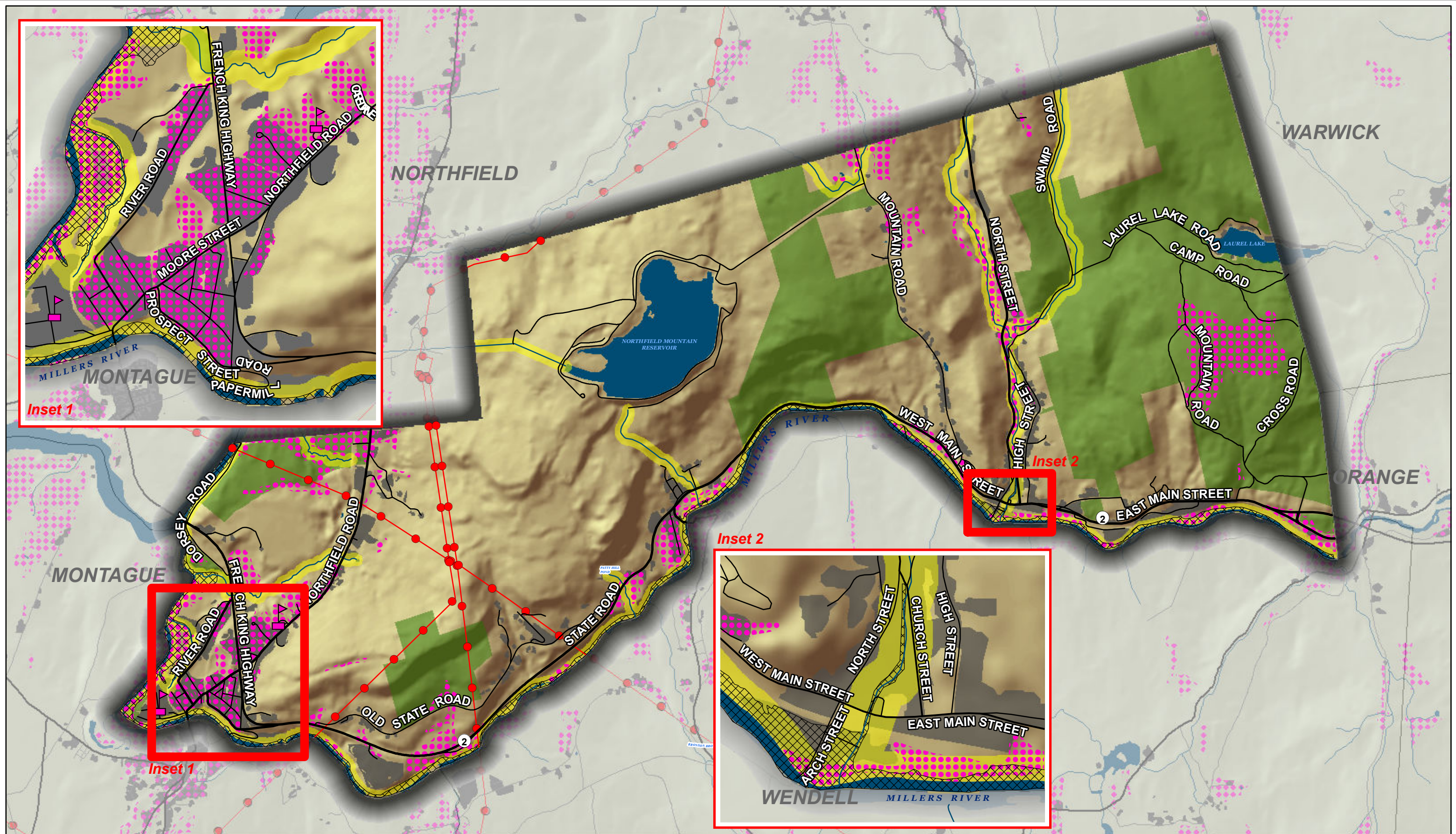
### Overlay District

- Groundwater Protection Overlay (GP)
- Wireless Communications Overlay (WD)
- Building Footprint
- Transmission Line

- Water Body
- River, Stream
- Major Road
- Road
- Rail Line
- School



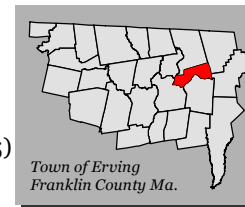




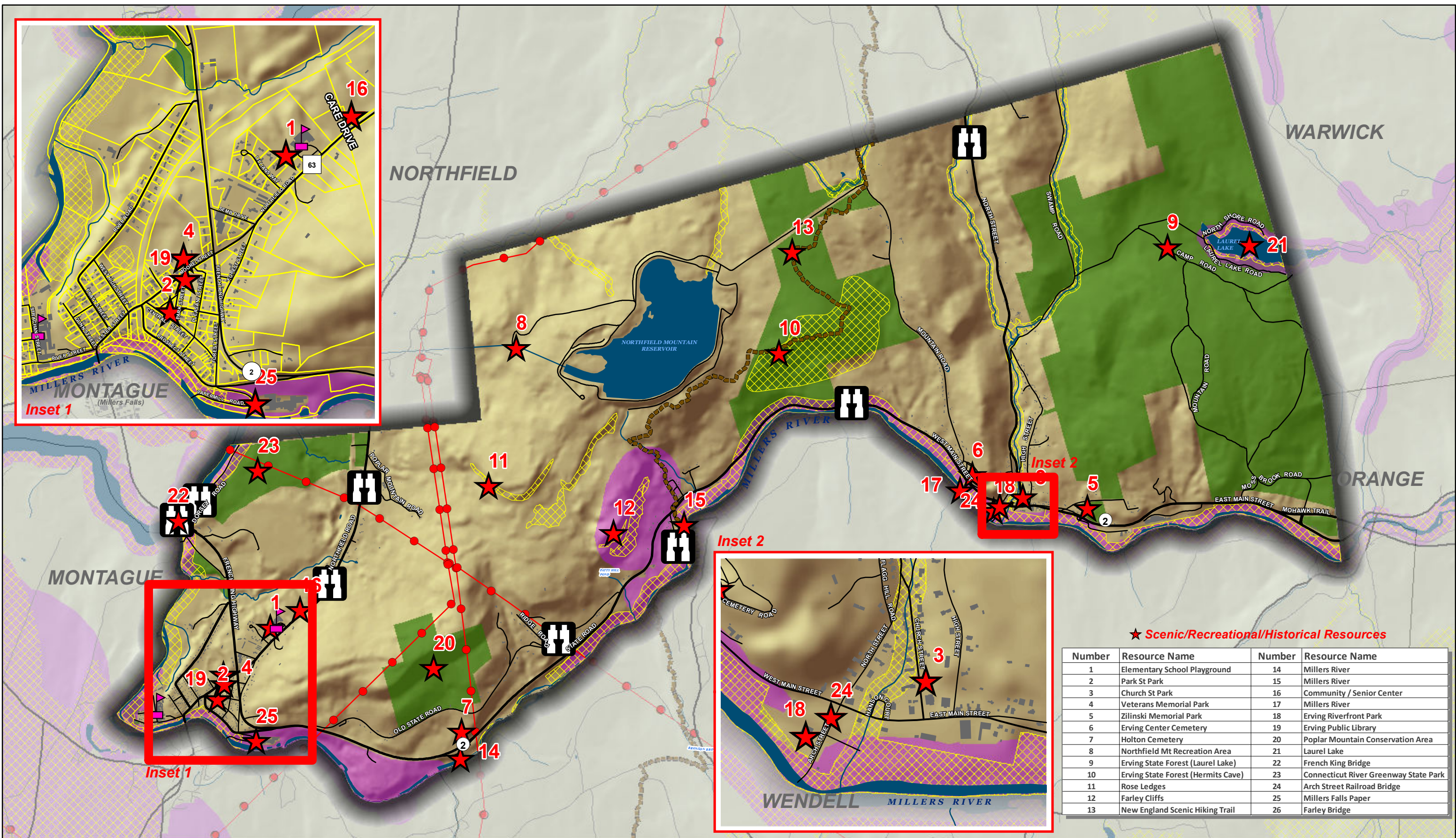
# Town of Erving Open Space & Recreation Plan 2018

## Soils & Geologic Features

- Permanently Protected Open Space
  - River Protection Act 200 ft Buffer
  - Prime Farmland Soils
  - School
  - 100 Yr. Flood Plain
  - Transmission Line
  - Water Body
  - River, Stream
  - Major Road
  - Road
  - Developed Land Use (2005)
- Note: All soils within Erving are classified as Prime Forestland Soils







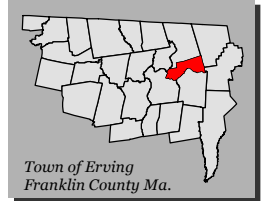
★ Scenic/Recreational/Historical Resources

Number	Resource Name	Number	Resource Name
1	Elementary School Playground	14	Millers River
2	Park St Park	15	Millers River
3	Church St Park	16	Community / Senior Center
4	Veterans Memorial Park	17	Millers River
5	Zilinski Memorial Park	18	Erving Riverfront Park
6	Erving Center Cemetery	19	Erving Public Library
7	Holton Cemetery	20	Poplar Mountain Conservation Area
8	Northfield Mt Recreation Area	21	Laurel Lake
9	Erving State Forest (Laurel Lake)	22	French King Bridge
10	Erving State Forest (Hermit's Cave)	23	Connecticut River Greenway State Park
11	Rose Ledges	24	Arch Street Railroad Bridge
12	Farley Cliffs	25	Millers Falls Paper
13	New England Scenic Hiking Trail	26	Farley Bridge

# Town of Erving Open Space & Recreation Plan 2018

## Scenic, Recreation, Historical & Environmental Resources

- Permanently Protected Open Space
- BioMap2 Core Habitat
- NHESP\* Priority Habitat of Rare Species
- Scenic/Recreational/Historical Resource
- Scenic View
- New England Scenic Trail
- Transmission Line
- Building Footprint
- Water Body
- River, Stream
- Major Road
- Local Road
- School



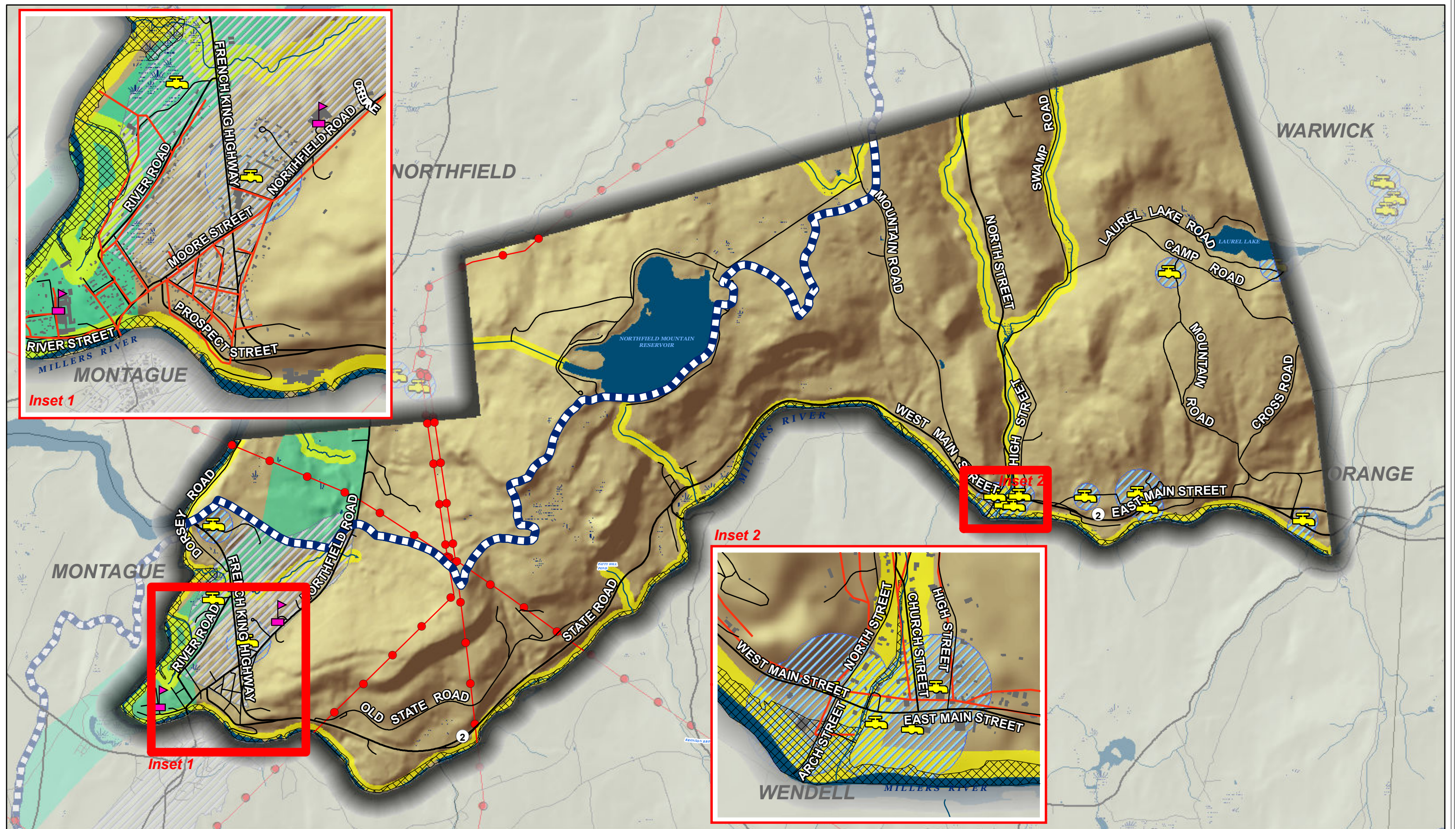
0 0.25 0.5 1 Miles

January 11, 2018

Sources: Map produced by the Franklin Regional Council of Governments Planning Department. GIS data sources include MassDOT, MassGIS and FRCOG. Depicted boundaries are approximate and are intended for planning purposes only, not to be used for survey.

frcof Franklin Regional Council of Governments





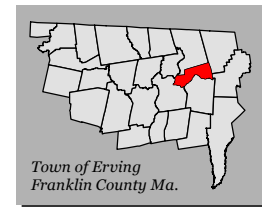
# Town of Erving Open Space & Recreation Plan 2018

## Water Resources

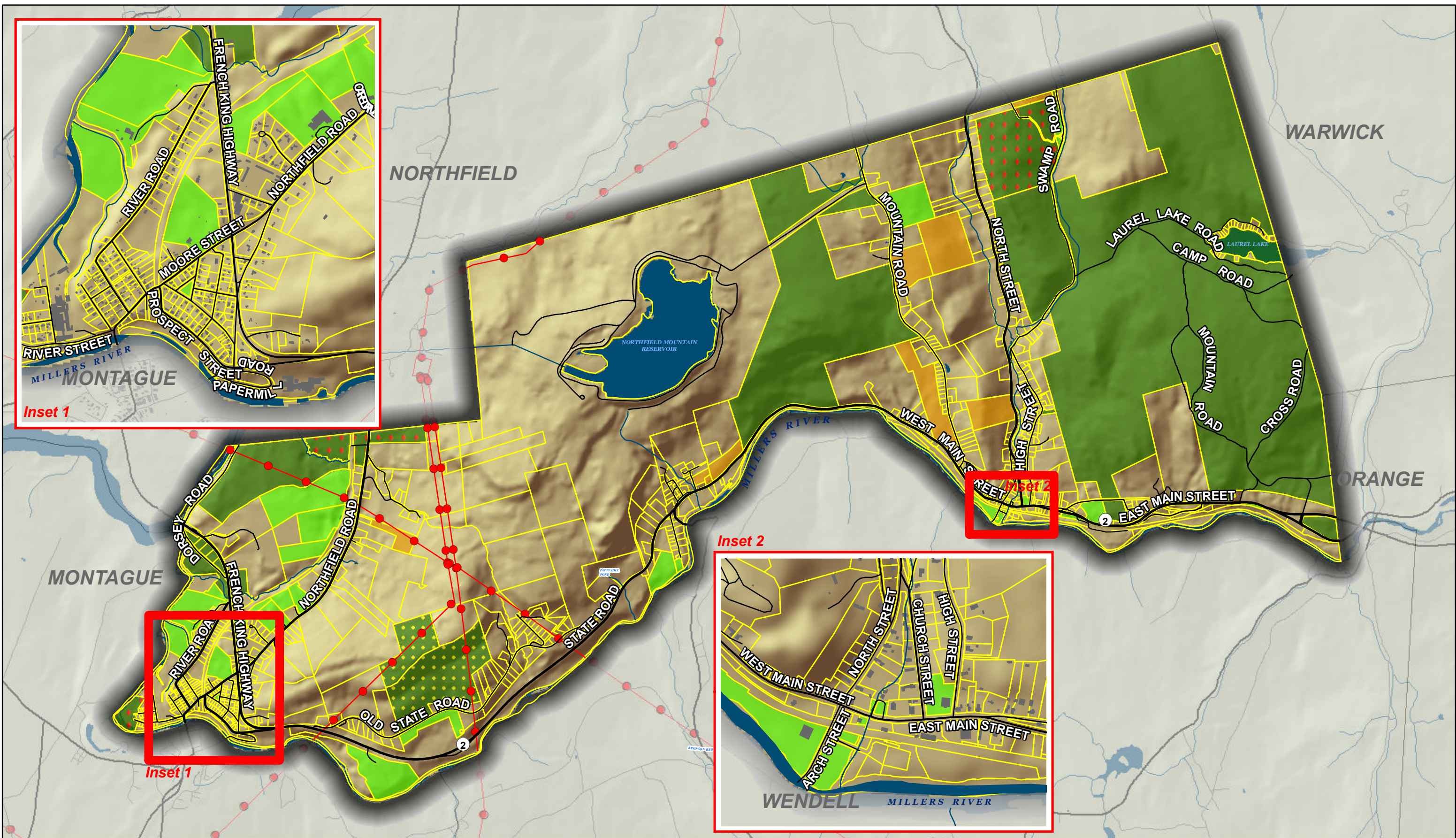
- Interim Wellhead Protection Area/  
Public Water Supply
- Zone II Recharge Area
- 100 YR Flood Plain
- Wetland

- Public Water Supply
- Medium Yield Aquifer
- River, Stream
- Water Body
- Watershed Boundary

- Sewer Line
- Building Footprint
- Transmission Line
- School
- Major Road
- Road







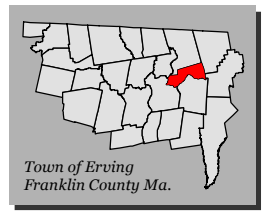
# Town of Erving Open Space & Recreation Plan 2018

## Open Space

- Open Space**  
**Permanently Protected**
- State Owned
  - Town/Land Trust Owned
  - Privately Owned
  - Limited Protection (Town)
  - Temporary Protection (Chapter 61)

- Parcel Boundary
- Building Footprint
- Transmission Line

- Water Body
- River, Stream
- Major Road
- Road

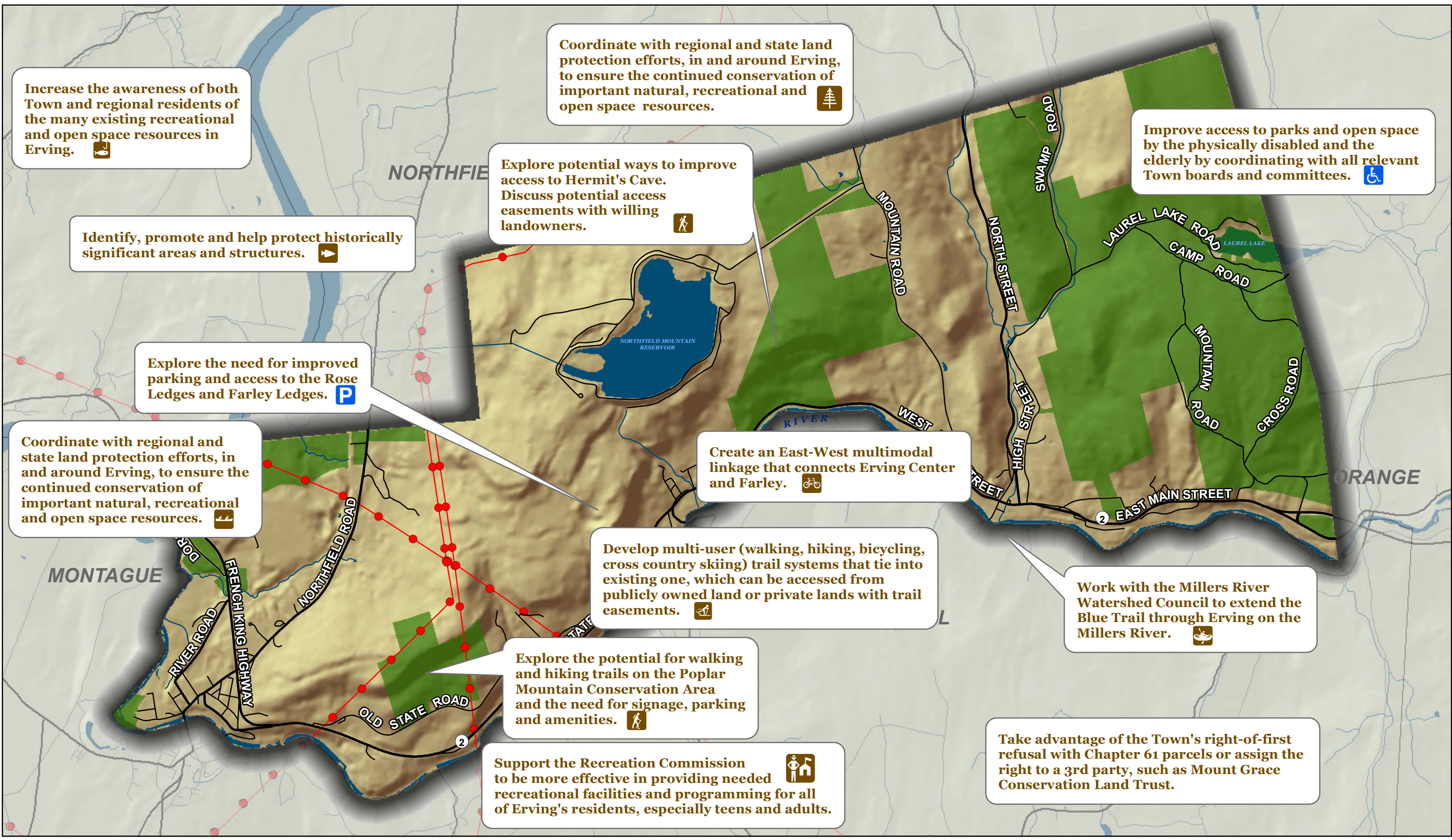


0 0.25 0.5 1 Miles

Sources: Map produced by the Franklin Regional Council of Governments Planning Department. GIS data sources include MassDOT, MassGIS and FRCOG. Depicted boundaries are approximate and are intended for planning purposes only, not to be used for survey.

**frcog** Franklin Regional Council of Governments





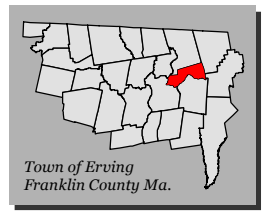
Town of Erving  
Open Space &  
Recreation Plan 2018

Action  
Plan

**Open Space**  
● Permanently Protected  
●● Transmission Line

Water Body  
River, Stream

Major Road  
Road



0 0.25 0.5 1 Miles

Sources: Map produced by the Franklin Regional Council of Governments Planning Department. GIS data sources include MassDOT, MassGIS and FRCOG. Depicted boundaries are approximate and are intended for planning purposes only, not to be used for survey.

**Franklin Regional Council of Governments**